



*The
Technology
People*

COMPANY PROFILE



TABLE OF CONTENTS

- CEO Massage
- Vision Statement
- Mission Statement
- Our Values
- About us
- EPC and Turnkey Solution
- Installation & Commissioning Works
- Equipment Erection Works
- Substation Erection Works
- Insulation and Ducting Works
- Mechanical / Fabrication Works
- Electrification Services
- Operation & Maintenance Services
- Rental O&M Services
- Maintenance & Troubleshooting
- Hydro Power Services
- Solar Power Services
- Supply of Spare Parts
- Quality Health Safety & Environment
- Our Experienced Team
- Project in Hand
- Project Executed
- Organization Chart
- Client list
- Contact us



Quality & Excellence in Engineering Services



CEO Message

It is my immense pleasure and for my team that you have taken time to visit our web site & Profile. ASEA has a history of responsible business conduct. We strongly believe that real business success is not just about profits measured in number but also, as importantly, about how those numbers are achieved. Our corporate strategy reflects our commitment to sustainable business practices and balancing responsibility alongside growth and productivity.



As the CEO of ASEA TTP, I embrace two key business drivers-impact and belonging. We achieve impact through creating solution that result in powerful, sustainable long-term success for our customers. We achieve belonging through establishing a corporate environment that encourage employees to thrive personally.

To fulfill our corporate mission and provide customer with progressive, strategic engineering and services, we offer talent unmatched in the industry. The strength of our people support the value, objectivity and ultimate success that we bring to customer projects in return.

We foster a multi-cultural collaborative company culture and a flexible organizational structure that facilitate creativity in motivating and managing our technical professionals. ASEA teams operate effectively and efficiently to deliver first class service to our valuable customers.

We further holds our ongoing commitment to the growth and the development of the strengths

We offer our customer, and to ASEA business drivers – “Impact and Belonging”

Saif Ullah Cheema

Chief Executive Officer



Vision

To be recognized as a reliable source for ensuring business success in delivering world class engineering products, services and turnkey solutions at the most competitive price with best quality and high reliability.



Mission

To be the leading service provider of quality electrical, mechanical & instrumentation installation & commissioning services throughout the country. We intend to continue our existence through sustained growth and profitability whilst realizing superior returns to benefit all primary stakeholders.



Our Values

- ❖ Trust
- ❖ Honesty
- ❖ Integrity
- ❖ Courage
- ❖ Respect and Dignity
- ❖ Prosperity for all stakeholders including employees.



ASEA was established in the year 2001 with an aim to be the best Electrical, Instrument, & Mechanical Engineering Services, Design & Documentations of Switchgear and Power Houses. ASEA is also keen to provide Consultancy Services in the field of Power Generation and Switch Gear Systems.

ASEA believes in establishing long-term, strategic relationships with our customers as opposed to short-term, opportunity-based engagements. We hold ourselves accountable for delivering quality results, all the way from top to bottom to each member of an engagement. Customers are our most trusted ambassadors of goodwill. We are leaders who are known for delivering superior value to their customers. ASEA delivers superior value to all customers by leveraging its expertise in Electromechanical Inspection, Consulting and Instrumentation for Installation, Testing, Commissioning, Contract research, and Training Services. ASEA has a long-standing track record of delivering quality assurance services to some of the best known organization in the Chemical, Electronics, Construction, Power Generation, Pharmaceutical, Manufacturing and Process Industry.

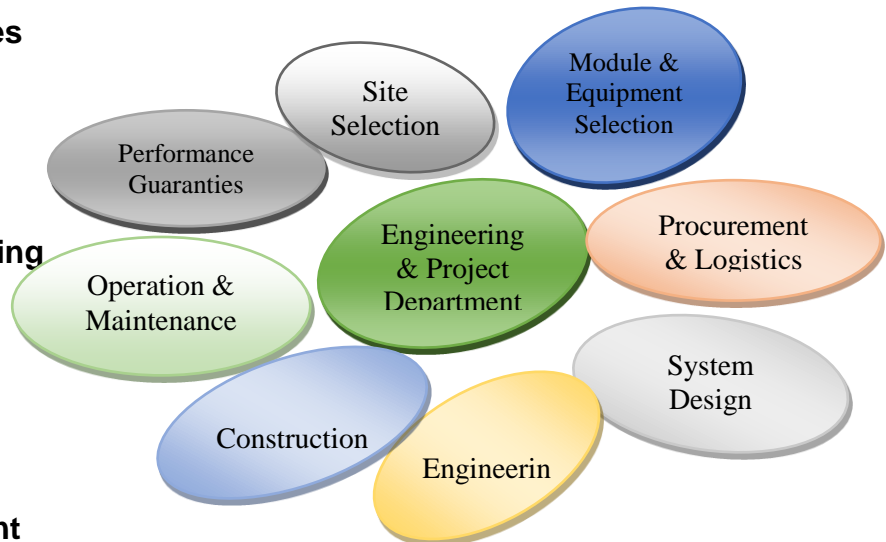
EPC and Turnkey Solution

ASEA offers turnkey project execution services involving project management, design, engineering, procurement, construction and commissioning for oil & gas, power, industrial and domestic sector. ASEA puts its management, technical and organizational capability to full advantage in the implementation of turnkey lump sum project thus providing the customers with the advantage of a single point responsibility and the best guarantee in terms of time, cost and quality for their investments.

ASEA offers the diversified experience of its management in combination with innovative project management practices, technology and techniques to work with our customers in the quest for continual improvement. Our project teams are well aware of the industry dynamics that shape our costumers competitive landscapes.

In ASEA, the various engineering disciplines are grouped in the following areas:

- **Consultancy Services**
- **Engineering**
- **Designing**
- **Civil Structure**
- **Plant layout and Piping**
- **Fabrication**
- **Electrification**
- **Parts Supply**
- **O & M Services**
- **Stationary Equipment**
- **Machinery and Rotating Equipment Package**



Each area of our engineering operates with the most advanced technological tools in order to guarantee optimized plants keeping in view the quality and safety aspects and complying with International Standards.

Equipment Erection, Installation & Commissioning Works

ASEA provides Full range of Equipment Erection, Installation & Commissioning works includes:

- Gas & Steam Turbines
- Gas & Diesel Gen sets (Capacity: 100KVA to 12.5 MVA)
- Boilers, Chillers
- Transformers
- Synchronizing Panels
- Auto Load Sharing Panels (A.L.S)
- AMF & ATS Panels
- Power, Control and Protection Panels



- Motor and Drives
- Sub-Stations



Equipment Erection, Installation & Commissioning Works

- HFO Gen sets (Capacity: 100KVA to 12.5 MVA)
- Printing machines
- Cooling Towers
- Heat Exchangers

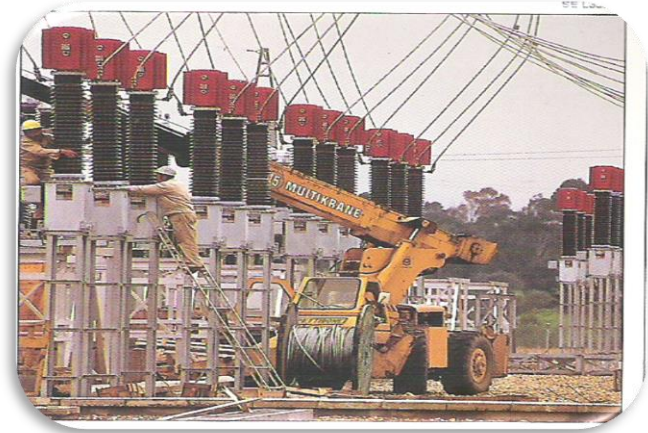


Substation Erection Works

We offer complete services for the erection and installation of the HT/LT systems and substations. This project includes designing, supplying, erection, testing and commissioning of the substations and electrical systems.

Electrification Services

In such projects, we offer electrification services which include complete designing, installation, testing and commissioning of the HT/LT electric systems. This electrical service is offered at most competitive costs to various industrial and commercial sectors.



Insulation and ducting works

- ❖ Extensive experience in insulation work of pipeline & storage tank, Boiler & Heat Exchangers.
- ❖ Fabrication & Ducting of Exhaust pipe lines & Air Ventilation system



Maintenance & Troubleshooting

Troubleshooting & Overhauling is one of the main activities on company's profile.

- Overhauling of Gas & Diesel Power Plants
- Purifiers (ALFA LAVAL, WESTFALIA, MITSUBISHI, etc.)
- Turbo Charger (ABB, HOLESET, KKK, etc.)
- Air Compressor (IMW, SAFE, BOGA, HENSHING, etc.)
- Heat Exchanger (ALFA LAVAL, NKR, GEA, etc.)



- PERKINS
- GUASCOR
- JENBACHER

- CATERPILLER
- WARTSILA
- MITSUBISHI
- NIIGATA
- MWM
- NEW SOLZER



- WAUKESHA DRESSER
- MAN ENGINES



Mechanical / Fabrication Works

ASEATTP provides quality fabrication & on-site installation and welding services to a wide variety of industrial customers. We are uniquely qualified to participate in numerous projects. We offer custom metal fabrication from thin gauges to plate thickness, and all varieties of metal.

- Fabrication & Erection of Piping 1" to 36" Dia
- Steel Structure Fabrication & Erection Up to 2200 Tons
- Storage Tank Fabrication & Erection 10' to 60' Dia
- Piping and Tank Insulation Work
- Installation & Alignment of Rotary and Stationary Equipment
- Sand Blasting and Paint Work
- Fabrication of ATS, AMF, H.T& L.T Panels and different types of cable trays & Cable Ladders.



- Fabrication of Power Panels.
- Fabrication of Distribution & Lighting D.Bs.



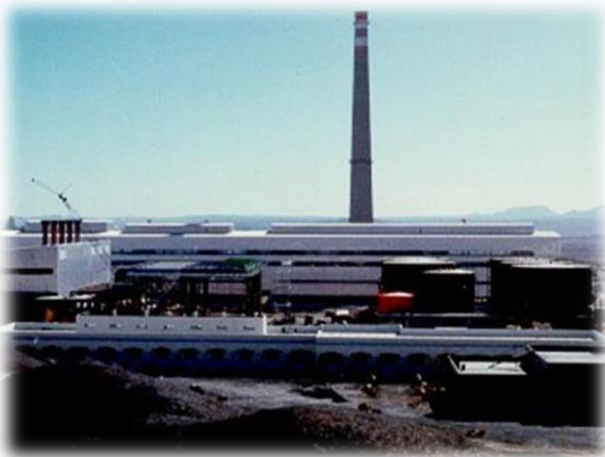
PIPELINE WELDING

Operation & Maintenance Services

Experience you can trust

With over 15 years in the O&M business, ASEA TTP is one of the best providers of Power plant and utility operation & maintenance services of **Coal, hydel, Gas** and **HFO** operated power plants. We help ensure optimum performance at existing power plants and provide consultation services for plant exist in planning stages till completion of project. Utilizing our Global resources, we provide complete plant services for **Coal, hydel, Gas** and **HFO** operated power plants across the country.

- **HFO, Diesel Engine Based Power Plant up to 50 MW**



- **HFO and Coal Steam Turbine based Power Plant up to 150 MW**



- **Gas Turbine based Power Plant up to 40 MW**



Features & Benefits

Our onsite staff provide total services at your plant, Including

- Reliable, safe and economical plant operation
- Day to day operation and routine maintenance
- Switchgear maintenance and management
- Equipment services and repair
- Engineering and technical support
- Performance guarantees
- Unplanned maintenance protection
- Predictive maintenance programs
- Power delivery & Fuel management



*The
Technology
People*

Rental O&M Services

ASEA offers the fast track rental power plant services, moveable & just plug-in type throughout the country in all sizes helping businesses increase profits by creating opportunities, solving problem and reducing risk by offering generators on rent.

Rental Gen sets are available in sound proof canopies & open type. Our rental projects are reliable, made by keeping in view highly technically approach, efficient and cost-saving rental power, to provide trouble free operation.

Industries Served

Industrial rental energy solutions for a variety of industries!

Our experienced personnel, professional services and dependable rental generators, base load emergency power plants in Oil & Petroleum Industry, Textile, Paper & Boards, CNG Stations, Hotels, Hospitals, Ceramics industry, Multi-storied Shopping Malls and many more.

Diesel and gas generators and ASEA services are consistently available 24/7 throughout the country.



Hydropower Services

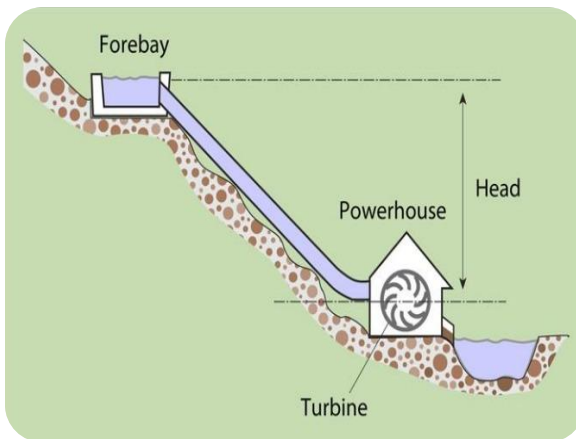
We feel immense pleasure to reveal the significance of the renewable technology. We cannot stay away from the consequences of the Renewable Energy, as currently, most of our energy comes from the burning of fossil fuels and based upon our current rate of consumption, scientific experts forecast that we have mere decades left in our fossil fuel resources. As part of our mission is to create awareness, understanding and to promote usage of clean, renewable energy by providing education and information regarding types of clean renewable energy, to the community, particularly for the betterment of energy sector of Pakistan.



Hydropower Services

Water power offers a number of advantages to the communities that they serve. Below are just some of the benefits that hydropower has over other methods of providing energy.

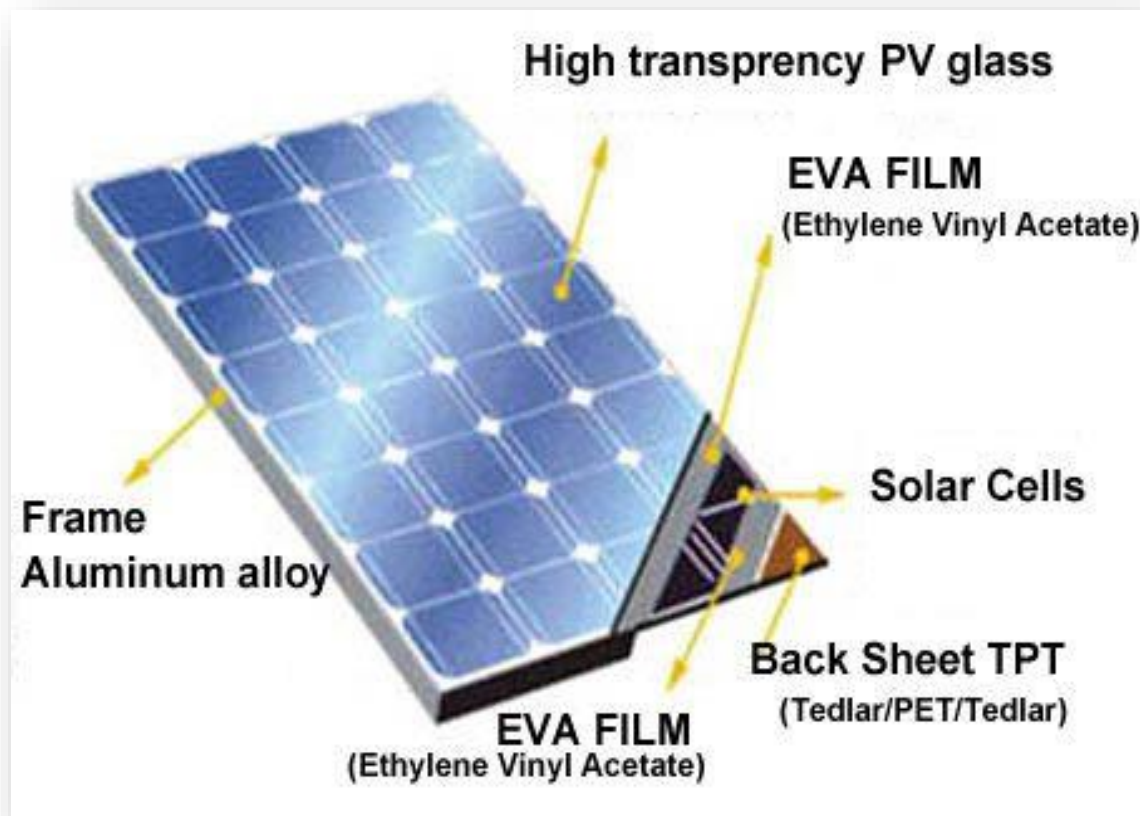
- Hydropower is fueled by water, so it's a clean fuel source, meaning it won't pollute the air like power plants that burn fossil fuels, such as coal or natural gas.
- Hydroelectric power is a domestic source of energy, allowing each state to produce their own energy without being reliant on international fuel sources.
- The energy generated through hydropower relies on the water cycle, which is driven by the sun, making it a renewable power source, making it a more reliable and affordable source than fossil fuels that are rapidly being depleted.



-
- Some hydropower facilities can quickly go from zero power to maximum output. Because hydropower plants can generate power to the grid immediately, they provide essential back-up power during major electricity outages or disruptions.
- In addition to a sustainable fuel source, hydropower efforts produce a number of benefits, such as flood control, irrigation, and water supply.

Solar Power Services

The sun provides the Earth with two major forms of energy: heat and light. There are some solar powered systems that utilize heat energy while others transform the light energy into electricity.

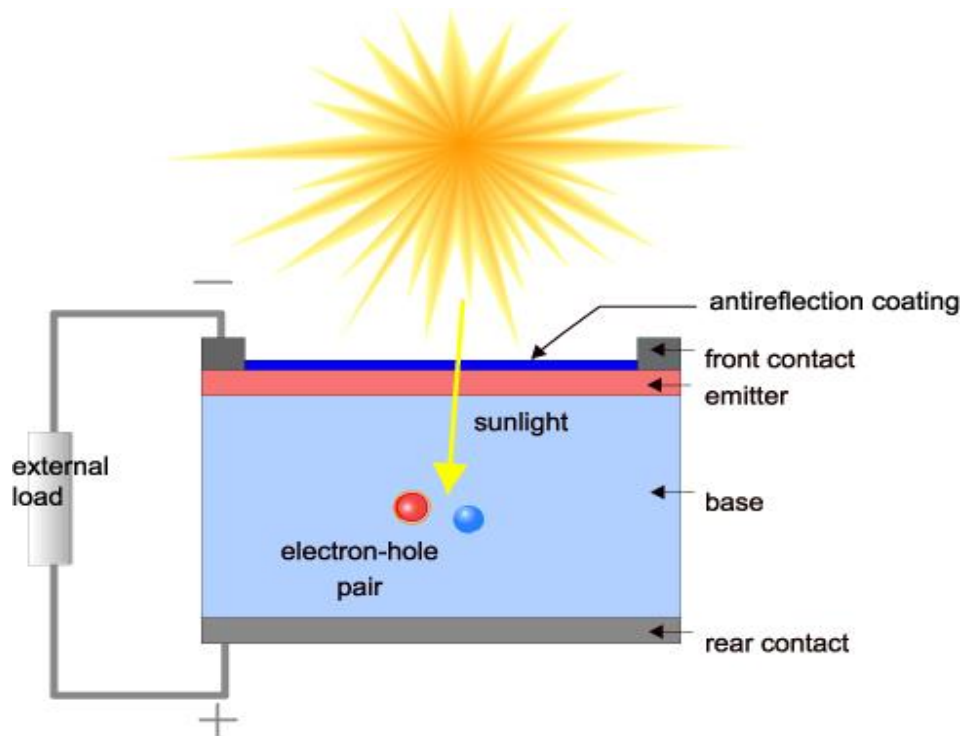


Solar Power Services

Solar cells directly convert light into electricity. Solar cells are also called "photovoltaic" or "photoelectric" cells.

Enough power can be generated to run a 100W light bulb from just one square meter of solar panel.

Solar cells were originally developed in order to provide electricity for satellites.



- Once solar panels are installed, they produce energy without generating waste or pollution. They operate with little maintenance or intervention.
- Solar electric generation is economically competitive where grid connection or fuel transport is difficult, costly or impossible. For example: satellites, island communities, remote locations and ocean vessels.
- Once the initial capital cost of building a solar power plant has been met, operating costs are low when compared to existing power technologies.

Solar Power Services

- They are applicable for low-power uses such as solar powered garden lights and battery chargers.



- Operate with little maintenance or intervention.
- Solar power helps to slow/stop global warming.



- Solar power saves your money.

Supply of Spare Parts

ASEA supply full range of OEM & Vaudois Spare Parts for, Old and New Power House:

- Spare Parts of Diesel & Gas Power Plant
- Synchronizing Panels
- Auto Load Sharing Panels (A.L.S)
- Manual, Auto Start & Load Sharing PLCs
- Auto Changeover Panel
- AMF & ATS Panels
- Power & Lighting DBs, Relay Logics Panels
- Power Factor Improvement Plant (PFI) & Motor Control Panels (MCCs)



Supply of Spare Parts

Following engines all spare parts are available in our store



- CATERPILLER
- WARTSILA
- MITSUBISHI
- NIIGATA
- MWM
- NEW SOLZER
- PERKINS
- GUASCOR
- JENBACHER
- WAUKESHA DRESSER
- MAN ENGINES



QUALITY HEALTH SAFETY & ENVIRONMENT

It is our policy to:

Ensures that every employee works under the safest possible conditions. It is our firm belief that every effort must be made to avoid accidents, injury to people, damage to property and the environment.



- ❖ ASEA believes that practically all accidents are preventable by carrying out risk assessments, and reducing risks identified, by appropriate controls.
- ❖ ASEA is committed to educate, train and commit employees to HSE issues.
- ❖ ASEA is committed to provide and maintain a healthy and safe working environment for all its Employees, Suppliers and any other entity who may be affected by our activities.
- ❖ ASEA recognizes the fact that good health and safety management has positive benefits to the organization and must therefore continually improve, update and adapt to the changes.
- ❖ Similarly, the company must also do what is reasonable to avoid or to minimize any adverse environment impacts from its activities and promote and adopt environmental sustainability initiatives.

- ❖ To meet or exceed our client's expectations, the first time and every time, through the application of proven quality principles at all levels of our service, while being guided by the tenets of our Code of Integrity and Professional Conduct.

The QHSE policy will be integrated at all levels and is the responsibility of management with the active support of all our staff.

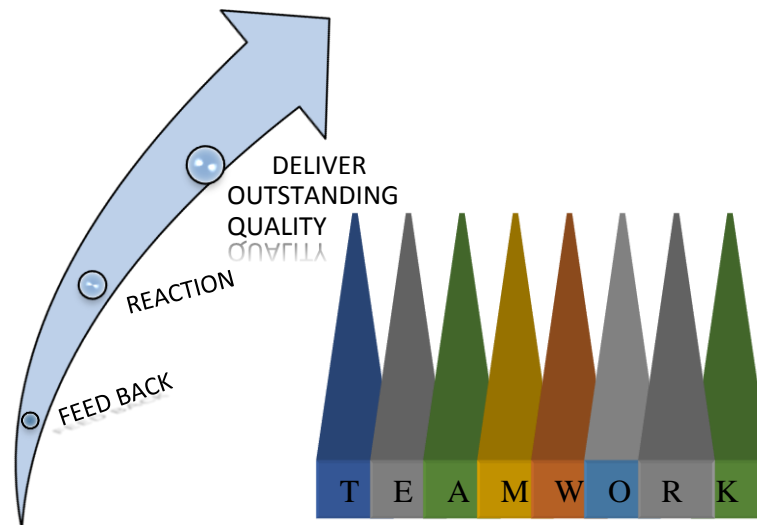


Our Experienced Team

We are dedicated to the belief that team is our most important assets. Whatever the nature of the challenge, it is our passionate, committed and empowered team who ultimately make the difference. Trust is at the core of all ethical business dealings. Trust that others will do



as they say and trust that we will live up to our commitments. One key to building trust is being transparent in the way, we communicate with others. Our diverse and experienced professionals work together toward a common goal of excellence in every aspect of our business. We live up to our commitments.



Projects in Hand

It has been more than a decade, **ASEA** is continuously performing Supply and Services of Electrical and others HT/LT equipment's to **Pakistan Oil Fields Ltd** at their different sites (Khaur, Pindori, Balksar, Meyal etc.).

Providing Technical and support services to **NAPWD Chilas**, in carrying out the Installation and Maintenance of 1MW Hydel turbine (**Tangir Valley**). Also providing Maintenance services on 1MW Hydel Power, at **Thak Nala Power House, NAPWD Chilas..**





Project Executed by ASEA TTP

- POWER PLANTS
- FERTILIZER INDUSTRY
- OIL & GAS FIELDS
- MINISTRY OF DEFENCE
- WATER & POWER AUTHORITY
- TEXTILE INDUSTRY
- LATHER PRODUCT INDUSTRY
- MECHANICAL PARTS MANUFACTURING INDUSTRY
- ELECTRICAL & ELECTRONICS APPLIANCES MANUFACTURERS
- CABLES & WIRES INDUSTRY
- CARPETS INDUSTRY
- CERAMICS INDUSTRY
- ENGINEERING COMPANIES
- EDUCATIONAL COMPLEX
- FOOD INDUSTRY
- FILLING & CNG STATION
- HOTEL & RESTAURANTS, BANKS,
- BEVERAGES INDUSTRY
- HEALTH SECTOR (HOSPITALS)
- ICE INDUSTRY
- OIL & GHEE MILLS
- CNG & PETROL PUMPS
- PRINTING & PACKAGES INDUSTRY
- PAPER & BOARD MILLS
- POLYETHYLENE & PROCESS INDUSTRY
- PHARMACEUTICAL INDUSTRY
- SHOPPING COMPLEX

CLIENTS LIST**I. POWER PLANTS**

- LAKHRA COAL POWER STATION, JAMSHORO (150 MW, COAL POWER)
- HABIBULLAH COASTAL ,QUETA (140 MW, COMBINE CYCLE)
- SAINDAK POWER PROJECT, QUETA (50 MW, HFO OPERATED)
- AZGARD 9, LAHORE
- ITTEHAD CHEMICAL, MUREDKEY
- MANNO ENERGY, MIAN CHANNO
- CRESCENT BAHU MAN, PINDI BHATTIAN
- PAK CHINA FERTILIZER, HARIPUR
- HAZARA PHOSPHATE FERTILIZER, HARIPUR

II. TEXTILE INDUSTRY

- AZGARD 9, LAHORE
- AZAM DYING & KNITTING, LAHORE
- ASMY DYING KOT LAKHPAT, LAHORE
- AL-KARAM FABRICS & PROCESSING MILLS SAMUNDARI ROAD FAISALABAD
- ABID TEXTILE INDUSTRY, KARACHI
- AMIN TEXTILE MILLS KHARINAWALA, SHEIKHUPURA
- BALAJ TEXTILE MILLS FERAZEPUR ROAD, KASUR
- BAIG TEXTILE MILLS SHAHDARA, LAHORE
- CRYSTAL DYING, GUJRANWALA
- CRESCENT BAHU MAN, PINDI BHATTIAN
- CITY ASHRAF TEXTILE MILLS FERAZEPUR ROAD, LAHORE
- CHAMAN TEXTILE MILLS KOT LAKHPAT, LAHORE
- DANYAL FABRICS RAILWAY ROAD, LAHORE
- FAISAL FABRICS KHURLIANWALA ROAD, FAISAL ABAD
- GEA TEXTILE, FAISALABAD
- GLAMOUR TEXTILE MILLS MANGA ROAD, RAIWIND

- HUB TEXTILE HATTAR INDUSTRY AREA, HARIPUR HAZARA
- HAROON TEXTILE, GUJRANWALA
- MAG TEXTILE KHURLIANWALA ROAD, FAISAL ABAD
- MUSLIM FABRICS, FAISALABAD
- MANNOO ENERGY & TEXTILE MANNOOWAL, MIAN CHANNO
- NOVELTY FABRICS MULTAN ROAD ,PHOL NAGAR
- NASEEM TEXTILE, FAISAL ABAD
- NOOR FATIMA KHURLIANWALA ROAD, FAISALABAD
- NOOR FATIMA, FAISAL ABAD
- PRIDE SPINNING MILLS MAIN ROAD, SHAH KOT
- PARADISE SPINNING ,SARAN ADDA
- RAVI SPINNING MANGA ROAD, RAIWIND
- RUBY TEXTILE MANGA ROAD, RAIWIND
- RADO TEXTILE, LAHORE
- REHMAN KARIM, SHAHDARA
- SAIF TEXTILE, FAISAL ABAD
- SHAFI SPINNING, SHAH KOT
- STANDARD HOSIERY, LAHORE
- SONY DYING, LAHORE
- SHARIF COTTON MILLS, MIAN CHANOO
- TARIQ SPINNING, KAMONKI
- UNITED FINISHING, SHAH KOT
- ZAINAB TEXTILE MILLS SAMUNDARI ROAD, FAISALABAD
- ZIA ASHRAF, KHURLIANWALA
- ZAFAR FABRICS, FAISALABAD

III. FILLING & CNG STATION

- ADEEL ENTERPRISES CNG FILLING BEDIAN ROAD, LAHORE
- AZAM CNG, LAHORE

- BAHOO CNG KOT SABZAL, SADIQABAD
- CANAL VIEW CNG, LAHORE
- FAROOQ CNG, LAHORE
- GHOUSIA CNG 9 KM NAROWAL ROAD, MURIDKE
- KONDAN CNG, FAISALABAD
- MEHMOOD CNG, LODHARAN
- MOHKAM DIN PETROLEUM SERVICE AIR PORT ROAD NEAR BHATTA CHOWK. LAHORE CANTT
- M.C.O.C. MOTOR WAY (M2) SERVICE AREA BHAIRA (NORTH)
- NLC CNG MULTAN ROAD THOKER, LAHORE
- SULTAN CNG FILLING STATION BELGIUM CHOWK SHAHI ROAD, RAHIM YAR KHAN
- SAIF CNG, FAISALABAD
- TAHIR-UL-HASAN CNG, GUJRANWALA
- U-SAQ CNG RAIWIND ROAD LAHORE PARK, LAHORE

IV. PAPER & BOARD MILLS

- AL AZIZ PAPER & BOARD MILL 9KM NAROWAL ROAD MURIDKE
- AL-QURAIISH SUN DAR STATE LAHORE
- GUJRANWALA PAPER& BOARD MILLS SHEIKHUPURA GUJRANWALA
- HASSAN BOARD & PAPER MILLS MURIDKE
- NAZIR PAPER MILLS, LAHORE
- PIONEER PAPER MILLS, LAHORE
- PAK PAPER BOARD PECO ROAD KOT LAKHPAT, LAHORE
- SADIQ PAPER PRODUCT 12 Km SHAHDARA G.T ROAD, LAHORE

V. POLYETHYLENE & PROCESS INDUSTRY

- ASHRAF ENTERPRISES BEGUM KOT, LAHORE
- APPLE LAYER PAPER INDUSTRY, GUJRAT
- GREEN EARTH RECYCLING INDUSTRY BEDIAN ROAD, LAHORE
- MANDHAR INDUSTRY, GUJRANWALA
- MIAN SHARIF SONS POLYPROPYLENE LIMITED BEGUM KOT, LAHORE
- POLYETHYLENE PRODUCTS POLYCON .DHARAMPURA, LAHORE

- RAMZAN ENTERPRISES, MURIDKE SKP
- RIAZ UD DIN POLYBAG INDUSTRY RAIWIND ROAD, LAHORE
- SUN INTERNATIONAL (P.E PIPING) FERROZEPUR ROAD, LAHORE

VI. MINISTRY OF DEFENCE

- ARMY CORE HEAD QUARTER, LAHORE CANTT
- ARMY GARRISON MESS, LAHORE CANTT
- ADAM WINGH 514/92A MADRASA ROAD CANNT, QUETTA
- ISI (RPOH) NEAR REGIONAL OFFICE POLICE BRIDGE COLONY, SAKKAR
- ISI OFFICE LAWARANACE ROAD, LAHORE
- NESCOM HEADQUATER, ISLAMABAD

VII. ELECTRICAL & ELECTRONICS APPLIANCES MANUFACTURERS

- KHAWAJA ELECTRONICS INDUSTRY RAI WIND ROAD, LAHORE
- KENTAX SIRGOH PVT LTD INDUSTRIAL AREA KATAR BAND ROAD THOKAR NIAZ BAIG, LAHORE
- ROYAL FAN INDUSTRIES G.T ROAD, GUJRAT
- UNITED COOLER & WASHING MACHINE, GUJRANWALA

VII. HOTEL & RESTAURANTS

- AFC RAWALPINDI 146-B CHANDNI CHOWK MURREE ROAD, RAWALPINDI
- AKBAR RESORT (CHANAB KINARA) CHANAB RIVER G.T ROAD WAZIRABAD
- HOTEL ROYAL YORK JOHAR TOWN, LAHORE
- REGENCY INN HOTEL ABID MAJEED ROAD, LAHORE CANTT

VIII. BANKS

- NATIONAL BANK OF PAKISTAN
- P.I.C.I.C.BANK LAHORE, PAKISTAN
- SME BANK LIMITED, PAKISTAN

IX. EDUCATIONAL COMPLEX

- AIOU LAHORE CAMPUS (ALLAMA IQBAL OPEN UNIVERSITY) LAHORE
- BAHRIA UNIVERSITY, ISLAMABAD

- HUWAI UNIVERSITY, ISLAMABAD

X. PRINTING & PACKAGES INDUSTRY

- IRSHAD SAEED PACKING BOBHATIAN CHOWNK, LAHORE
- PACK TECH INDUSTRIAL AREA KOT LAKHPAT, LAHORE
- SPRIN TECH.PACKING FERAZEPUR ROAD, LAHORE

XI. TRADERS

- C.I.L CRESCENT IMPORT LIMITED, ISLAMABAD
- CIRCLE INTERNATIONAL TRADERS MULTAN ROAD, LAHORE
- RIAZ UD DIN GLAMOUR ADDA RAI WIND ROAD, LAHORE

XII. CABLES & WIRES INDUSTRY

- MODERN WIRE INDUSTRY NEAR MESCO OFFICE, LAHORE
- N.B.S. WIRE INDUSTRIES BAJWA ROAD, GUJRANWALA
- NOMI BHATTI WIRE INDUSTRIES, GUJRAT

XIII. ENGINEERING COMPANIES

- CUMMINS S&S THE MALL ROAD, LAHORE
- J-TECH (DESCON PLANNING WING) FERAZEPUR ROAD, LAHORE
- ALBARIO ENGINEERING, LAHORE

XIV. FOOD INDUSTRY

- FAMOUS FOOD, LAHORE
- K.M FOOD INDUSTRIES PVT LTD MULTAN ROAD CHUNG, LAHORE
- KAUSAR RICE, DEPALPUR
- HASSAN RICE CORPORATION, PINDIBHATIAN
- ENGRO FOODS, SAKHAR
- ITTEFAQ RICE FACTORY, SADIQABAD
- ITTEFAQ SUGAR MILLS PVT LTD, CHANNI GHOT

XV. HEALTH SECTOR (HOSPITALS)

- CENUM CENTRE FOR NUCLEAR MEDICINE MAYO HOSPITAL, LAHORE

- KIDNEY CENTER SHEIKH ZAID HOSPITAL, LAHORE
- NEUTROPHARMA BAIGUM KOT, LAHORE

XVI. LATHER PRODUCT INDUSTRY

- K-SHOES INDUSTRIES MANGA ROAD, LAHORE
- SIDDIQ LEATHER WORKS SHEIKHUPURA ROAD, LAHORE

XVII. OIL & GHEE MILLS

- ASLAM OIL & GHEE MILL G.T ROAD, MURIDKE
- HAFIZ OIL & GHEE MILL BAHAWALPUR ROAD, MULTAN
- AMJAD OIL MILLS, SADIQABAD
- HAMEEDA OIL AND GHEE MILLS, NAROWAL

XVIII. PHARMACEUTICAL INDUSTRY

- SURGE LABORATORIES PVT LTD FAISALABAD ROAD, BIKHI SHEIKHUPURA
- WELLSHIRE LABORATORIES PAKISTAN LTD KOTLAKHPAT INDUSTRIAL AREA, LAHORE

XIX. SHOPPING COMPLEX

- HYPERSTAR FORTRESS STADIUM, LAHORE CANTT
- PACE PAKISTAN LTD. (PACE SHOPPING CENTER GUJRAT)

XX. BEVERAGES INDUSTRY

- SUNRISE BOTTLING COMPANY (7 UP) GULBURG III, LAHORE

XXI. CARPETS INDUSTRY

- NAYYAR CARPET, GUJRAT

XXII. CERAMICS INDUSTRY

- PEERAGE CERAMICS G.T ROAD KAMOKEY, GUJRANWALA
- MASTER TILES, GUJRANWALA

XXIII. MECHANICAL PARTS MANUFACTURING INDUSTRY

- METALINE INDUSTRIES PVT LTD 14 KM MULTAN ROAD SHAHPUR LAHORE

XXIV. WATER & POWER AUTHORITY

- NAPWD. CHALLAS DISST DIAMAR (NORTHERN AREA)
- NAPWD. TANGIR VALLY, DISST DIAMAR
- NAPWD. CARGAH DISST GILGAT
- NAPWD. GILGAT

XXV. FERTILIZER INDUSTRY

- HAZARA FERTILIZER (PVT) LTD, HARIPUR
- PAK AMERICAN FERTILIZERS LTD.

XXVI) ICE INDUSTRY

- HUSSAIN ICE KOT LAKHPATH, LAHORE
- AMJAD ICE FACTORY, SADIQABAD



Company Resume

Name : Asghar Sons Engineering Associates (ASEA).

Business Nature : Consultancy Services, EPC Contractor,
Trunkey Projects, Electrical & Instrument Contractor
Mechanical/Fabricator Contractor
Operation & Maintenance Contractor
General Order Suppliers

Works : Near Ch. Fabrics, Street Baghdadi House,
18-km, Main Multan road, Chung-Lahore.

Established : Since 2001

Accredited By : Pakistan Engineering Council

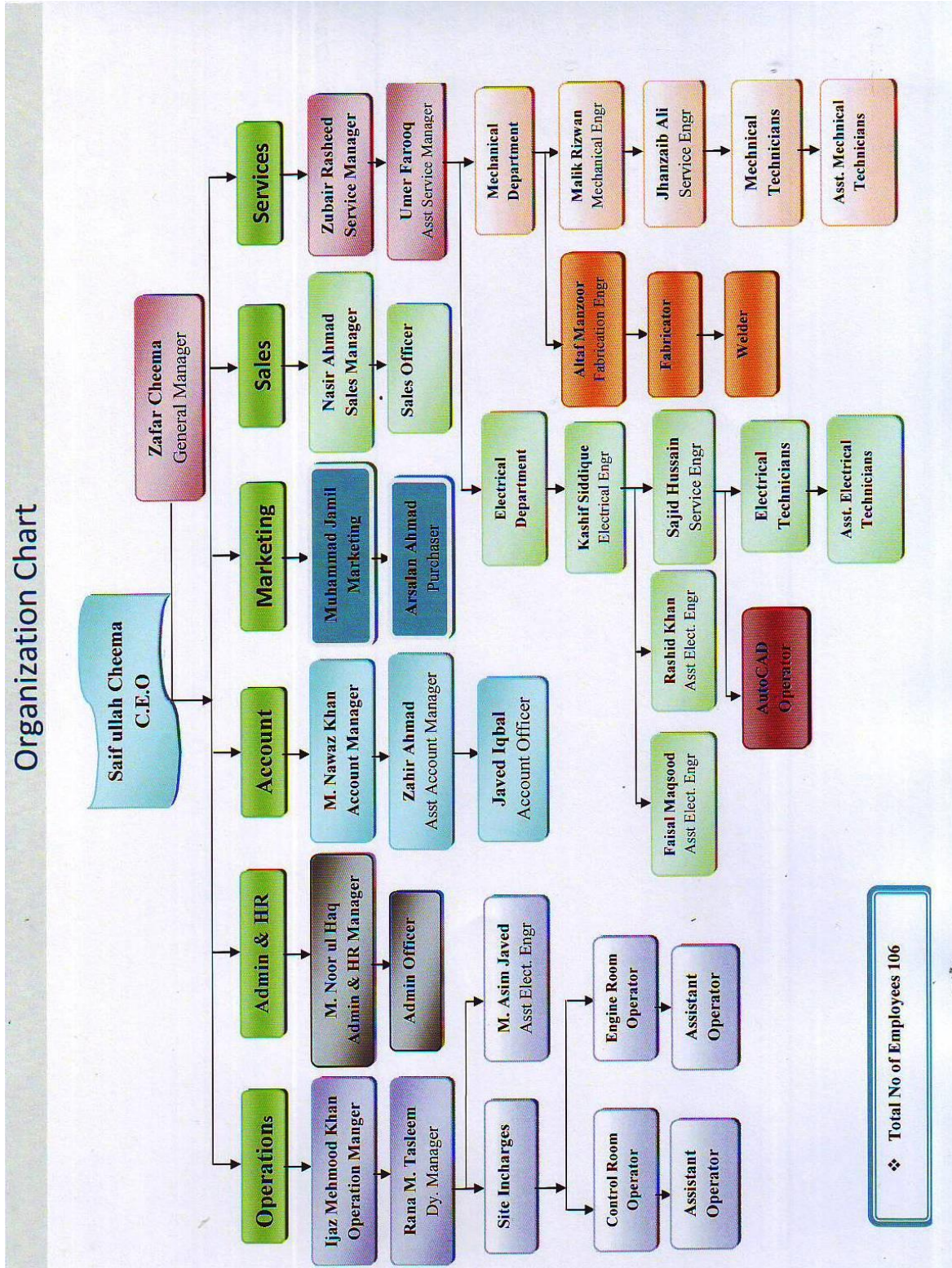
P.E.C License No : 33544

NTN No : 2604894-9

GST No : 04-00-9998-066-28

Banks : Allied Bank Limited.
: Muslim Commercial Bank Limited.

Organization Chart





Contact Us:

Head Office:

139-B, Govt. Punjab Servant Housing Scheme, Defense Road,
Near Shahkam Chowk, Mohlanwal, Lahore.

Fax: +92 42 32535520 **Mob:** +92 300-4011899

Email: ceo@aseattppower.com & saifullah@aseattppower.com

Works:

Near Ch. Fabrics, Street Baghdadi House, 18-KM, Main Multan
Road, Chung, Lahore

Website: www.aseattppower.com

Sub Office:

Hadith Manzil, Street no.11, Habib Colony, Rahim Yar Khan.

Email: admin@aseattppower.com